

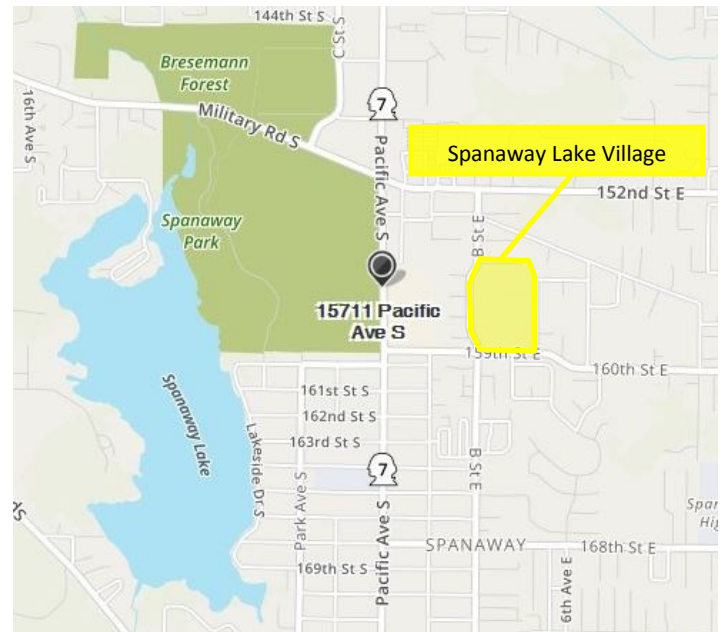


### AVAILABLE FOR LEASE

15711

1,560sf

\$16.50psf/Yr., NNN



- **SAFEWAY AND RITE AID ANCHORED CENTER.**
- Established surrounding tenants include: LA Fitness, Tractor Supply, Logic Jiu Jitsu and ATI Physical Therapy.
- Ample parking available.
- Ideally located at the main intersection of Pacific Ave S and 169th St East.
- Just minutes from I-5.
- Daily Traffic Count: 32,000 VPD (2017)

**Listing Broker:**

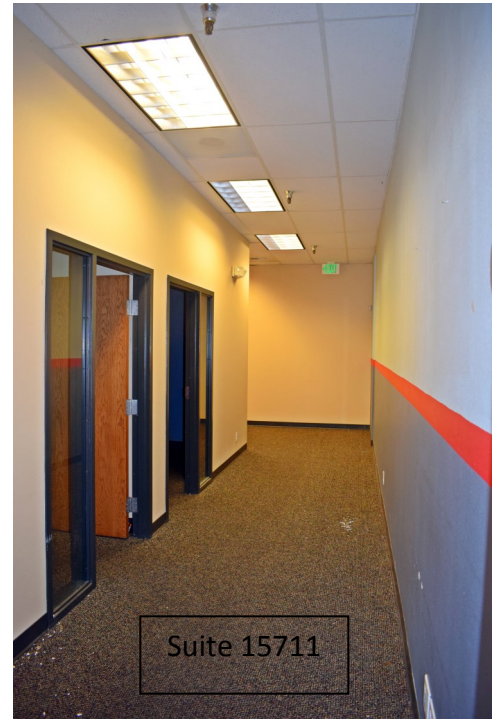
**Syd Severe**

**Office: 425.888.2993**

**Cell: 425.495.1353**

**Email: Syd@mkps.net**

Demographics	1 MILE	3 MILES	5 MILES
2018 Population:	9,374	63,332	148,635
2018 Average Household Income:	\$62,365	\$69,901	\$64,762



**Listing Broker:**

**Syd Severe**

**Office: 425.888.2993**

**Cell: 425.495.1353**

**Email: [Syd@mkps.net](mailto:Syd@mkps.net)**